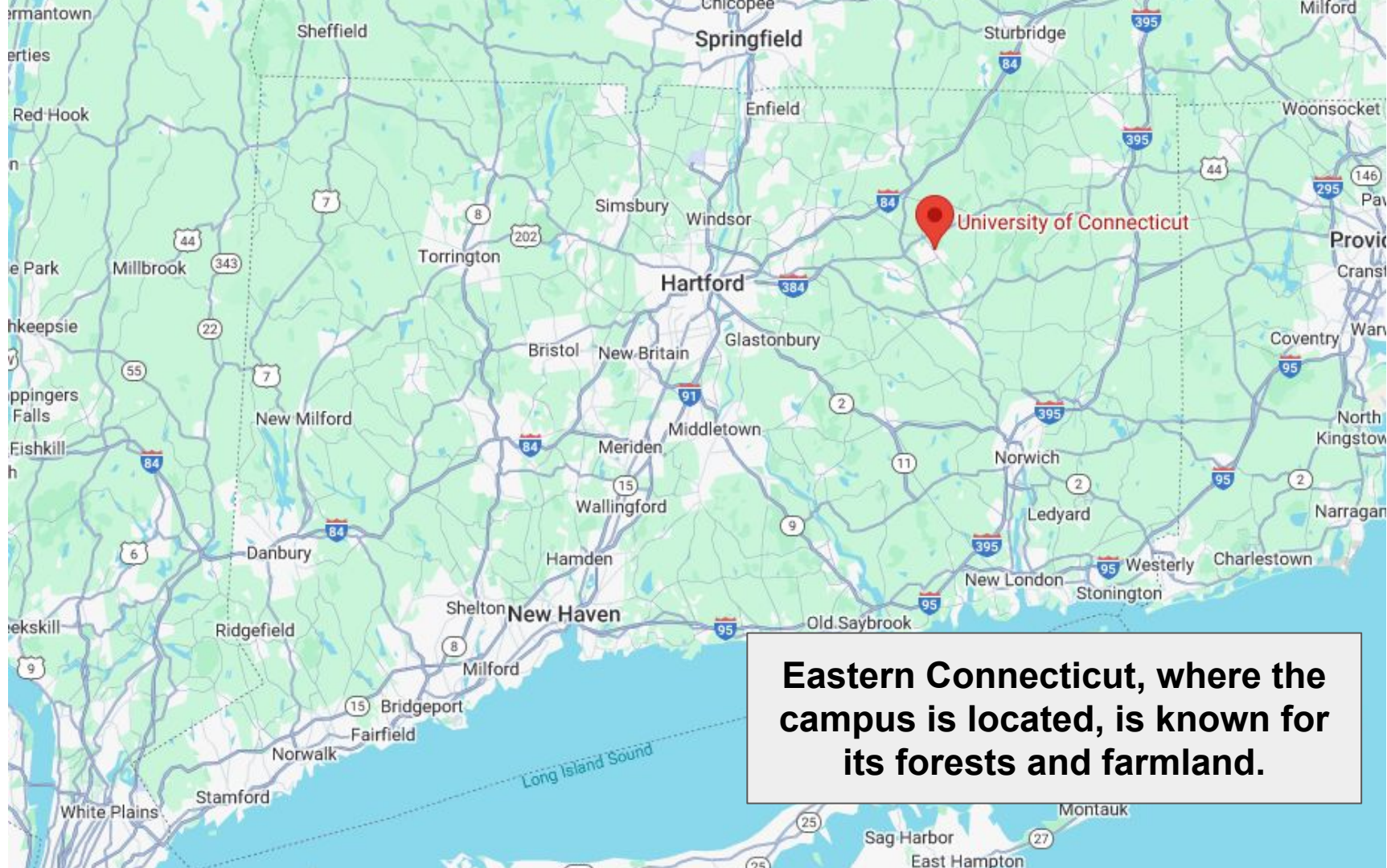


There is something in the woods at the  
University of Connecticut...



**UConn's main campus is located in Storrs, Connecticut.**



University of Connecticut

**Eastern Connecticut, where the campus is located, is known for its forests and farmland.**



Industrial  
Tract

UConn Forest

University of  
Connecticut

**The campus is surrounded on all sides by dense forest.**

But if we look closer at the forest,  
a mystery appears...



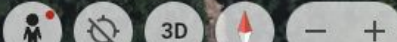
Fenton River

Fenton River

Fenton Tract

UConn Forest

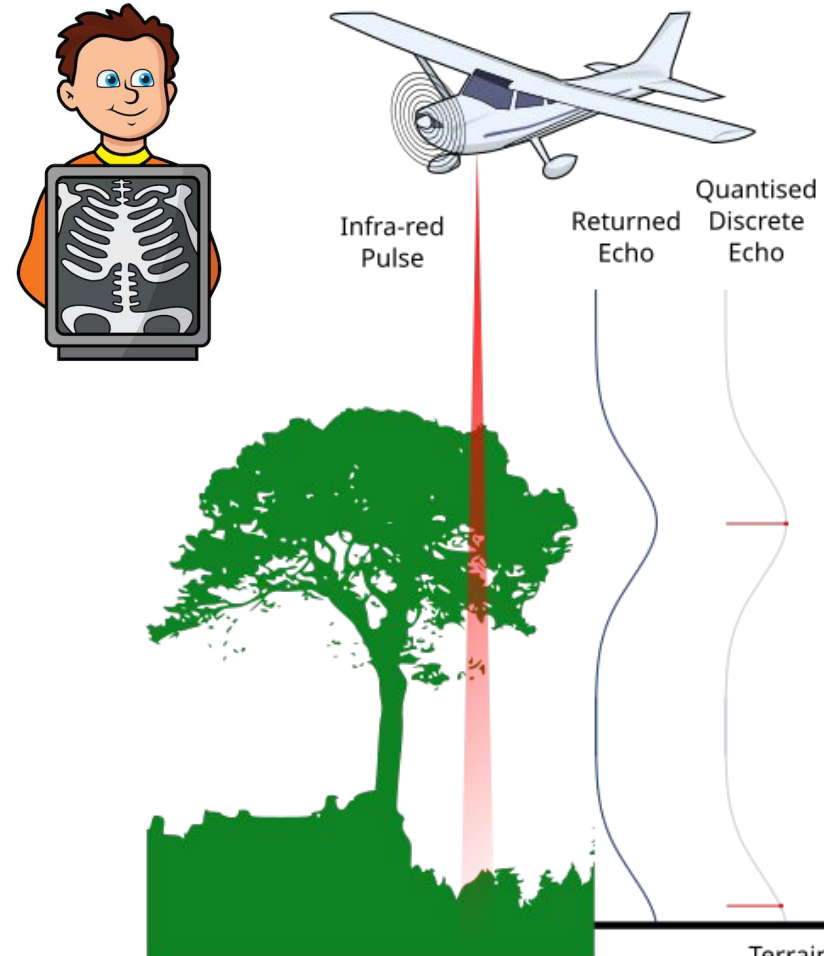
From above, the UConn forest looks like what you'd expect... lots of trees. However...



We can see what's beneath the trees...

Scientists use a technology called "LIDAR" to create maps of the physical features UNDERNEATH the tree canopy in a forest. Airplanes fly above the forest and use lasers to figure out what is hidden beneath the trees.

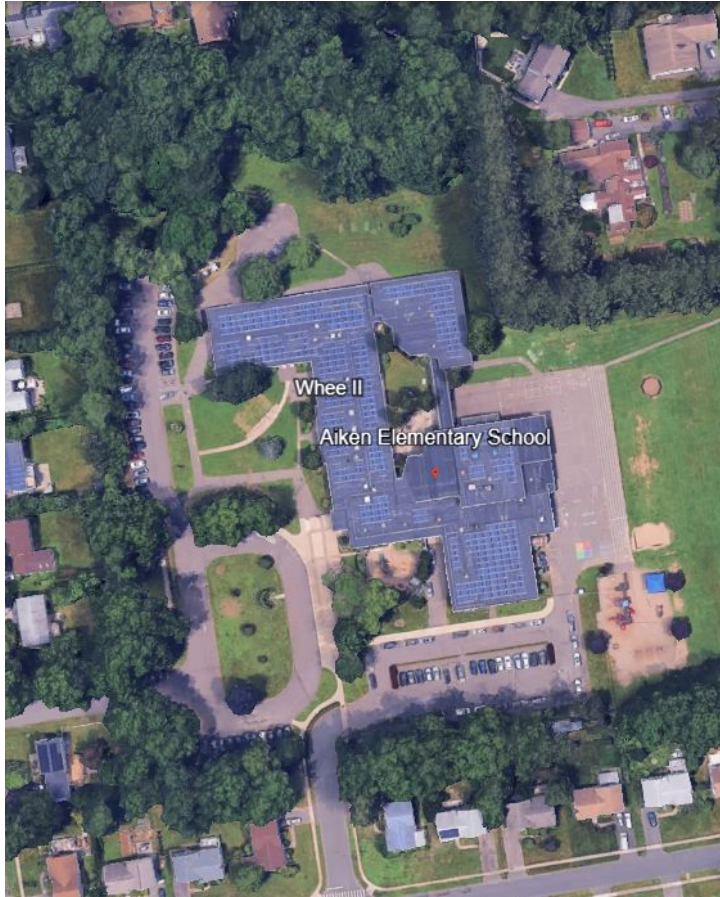
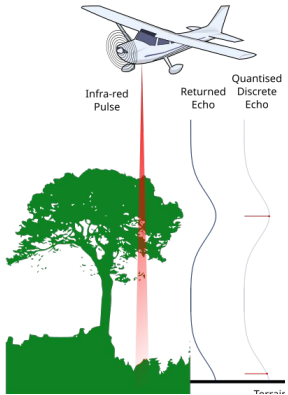
Think of it like an x-ray machine for the forest floor.



Find your school on the next few slides to compare LIDAR and satellite views.

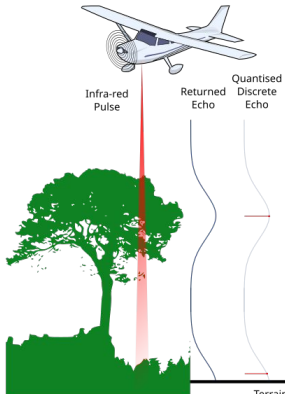
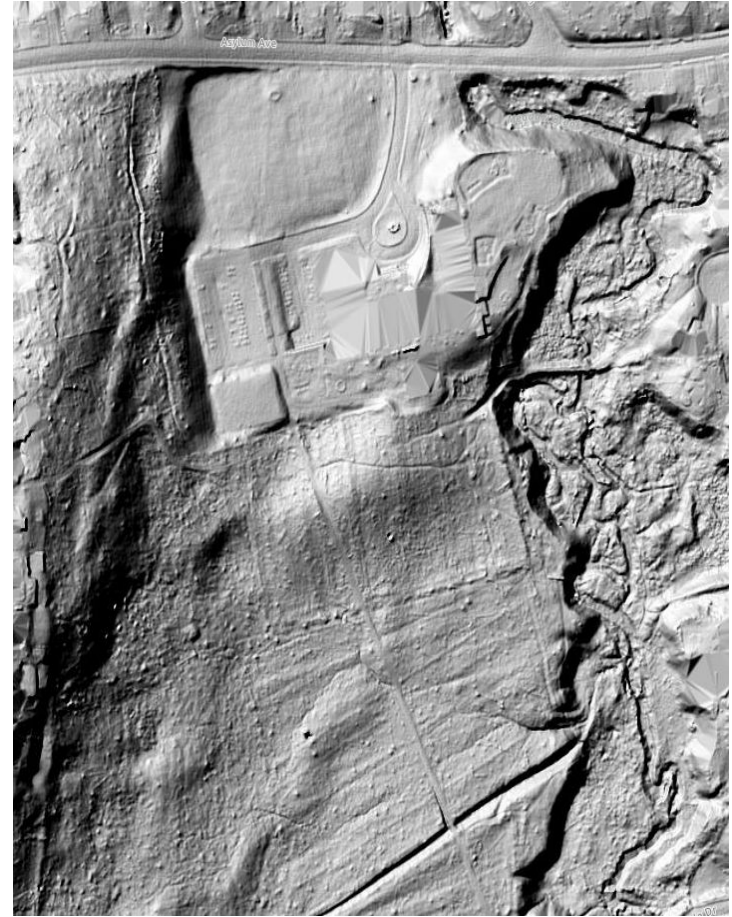
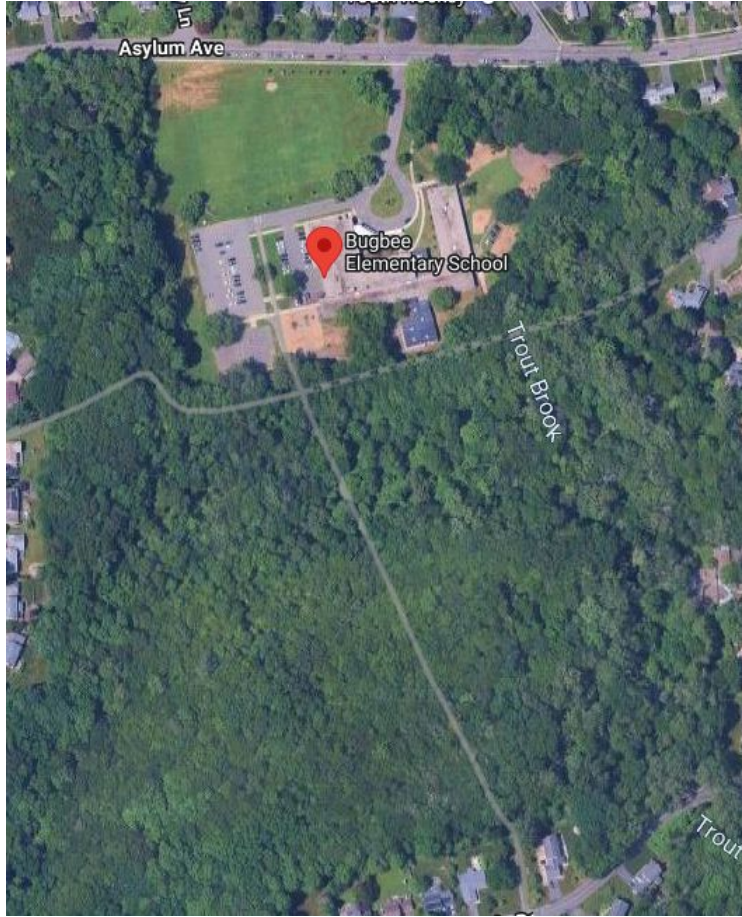
# Aiken

Here's a satellite and LIDAR view of our school. What do you notice?



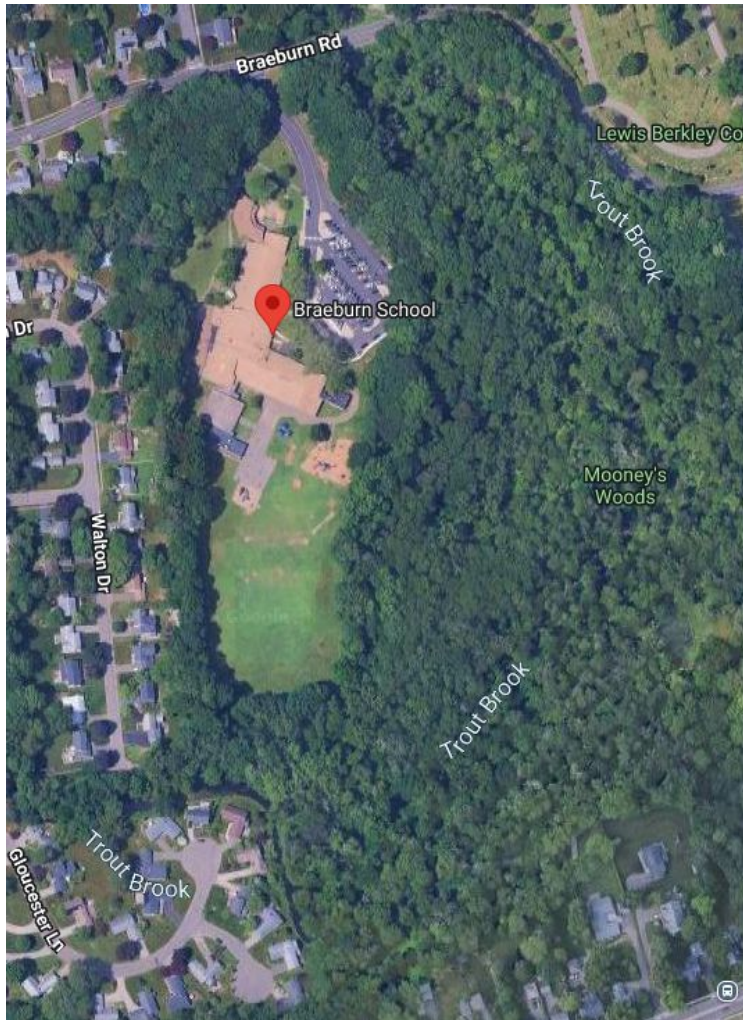
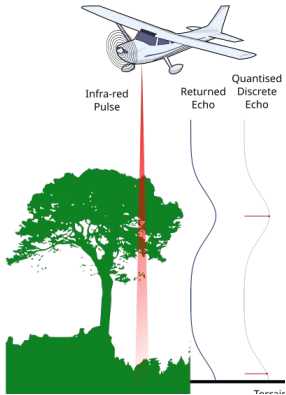
# Bugbee

Here's a satellite and LIDAR view of our school. What do you notice?



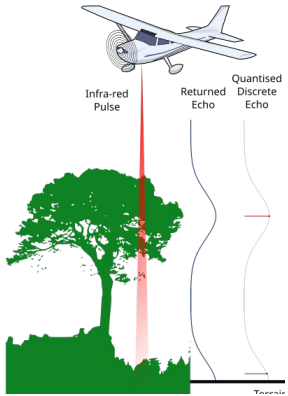
# Braeburn

Here's a satellite and LIDAR view of our school. What do you notice?



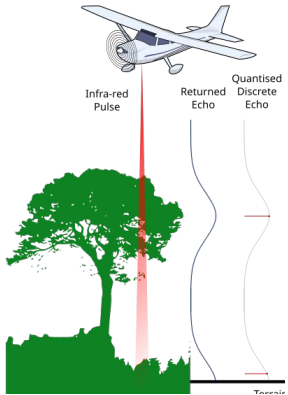
# Charter Oak

Here's a satellite and LIDAR view of our school. What do you notice?



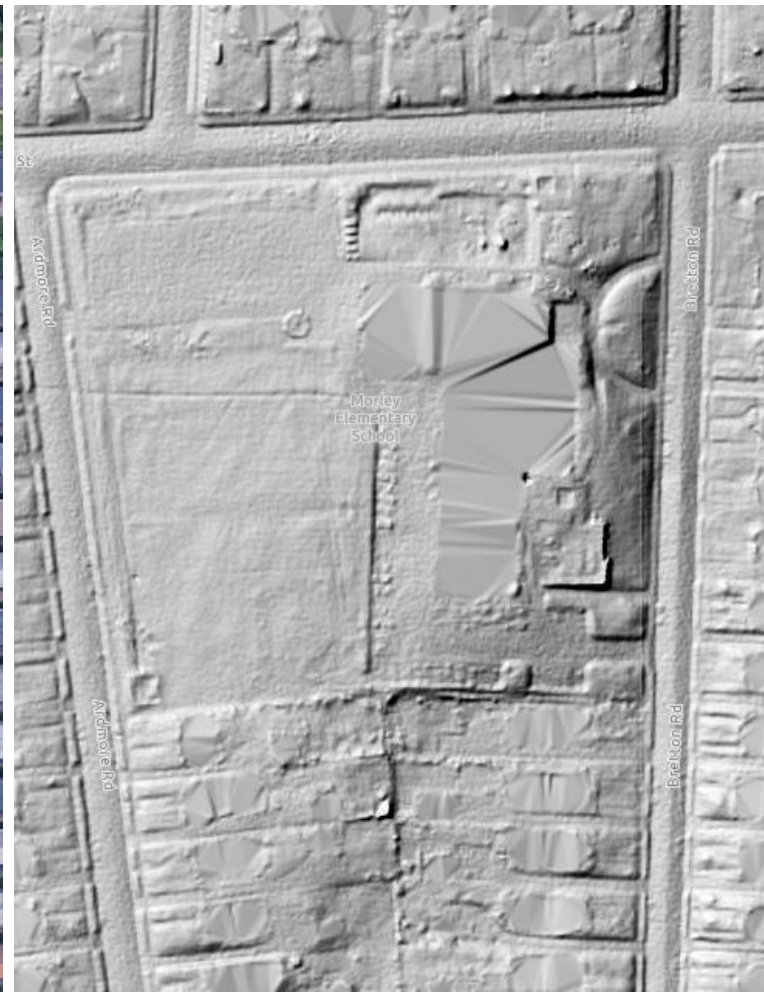
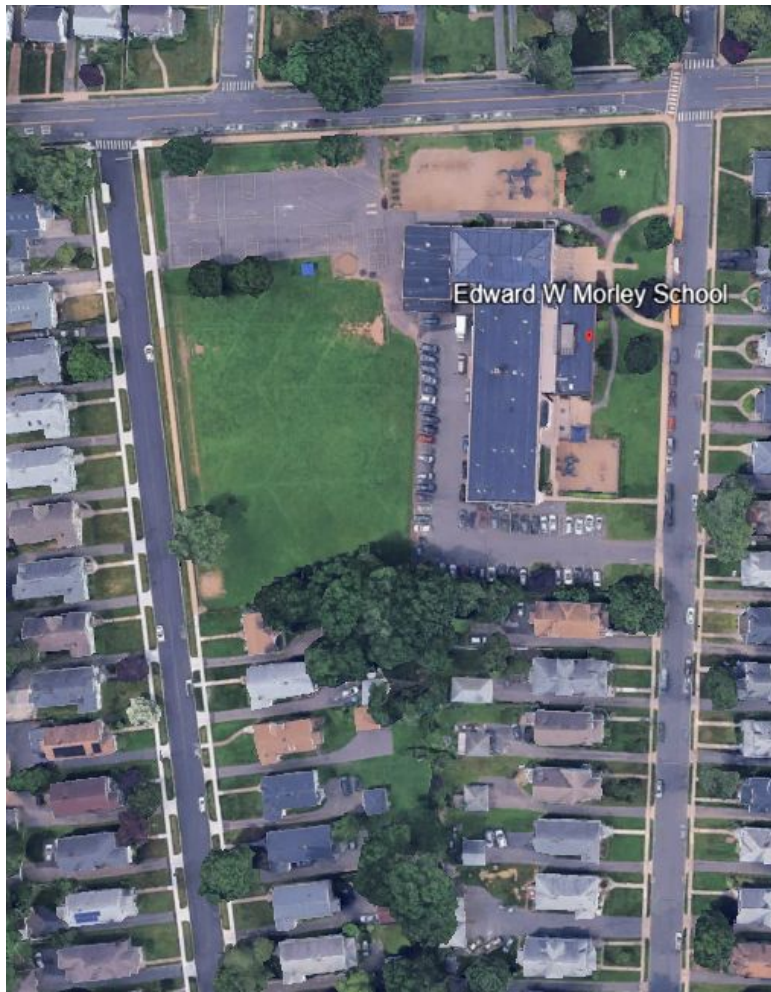
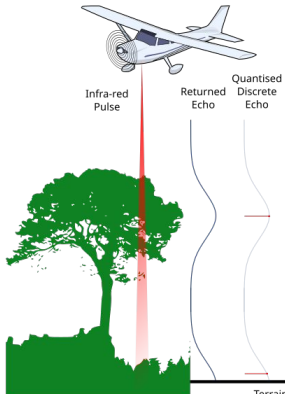
# Duffy

Here's a satellite and LIDAR view of our school.  
What do you notice?



# Morley

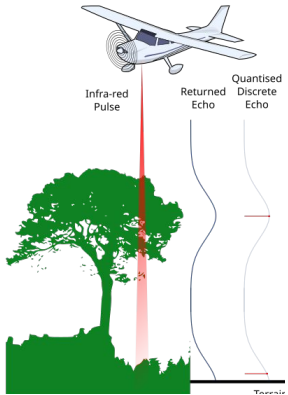
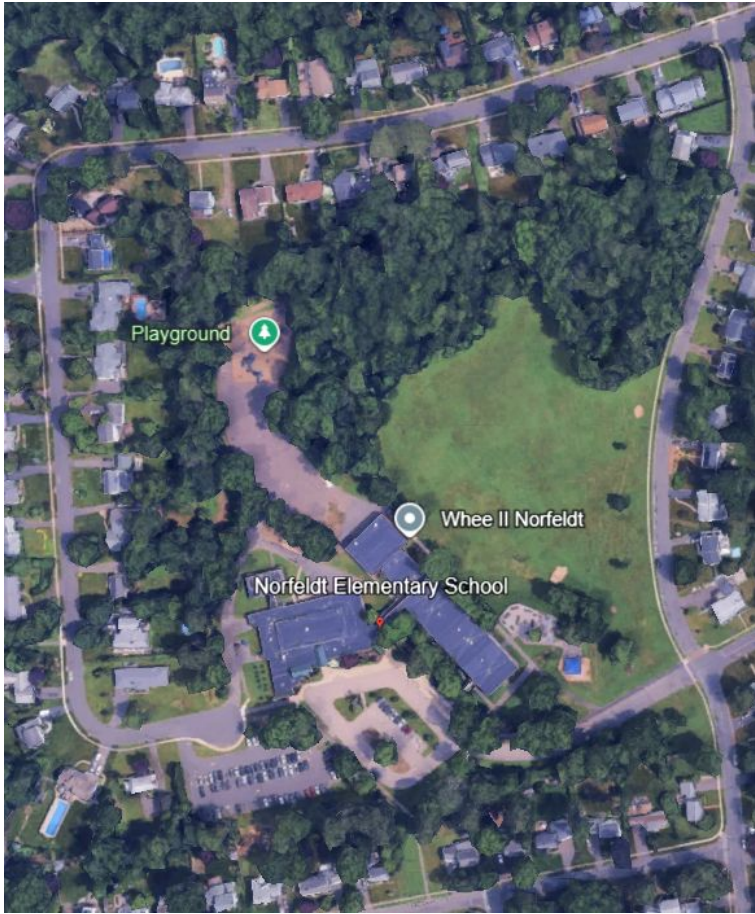
Here's a satellite and LIDAR view of our school. What do you notice?



# Norfeldt

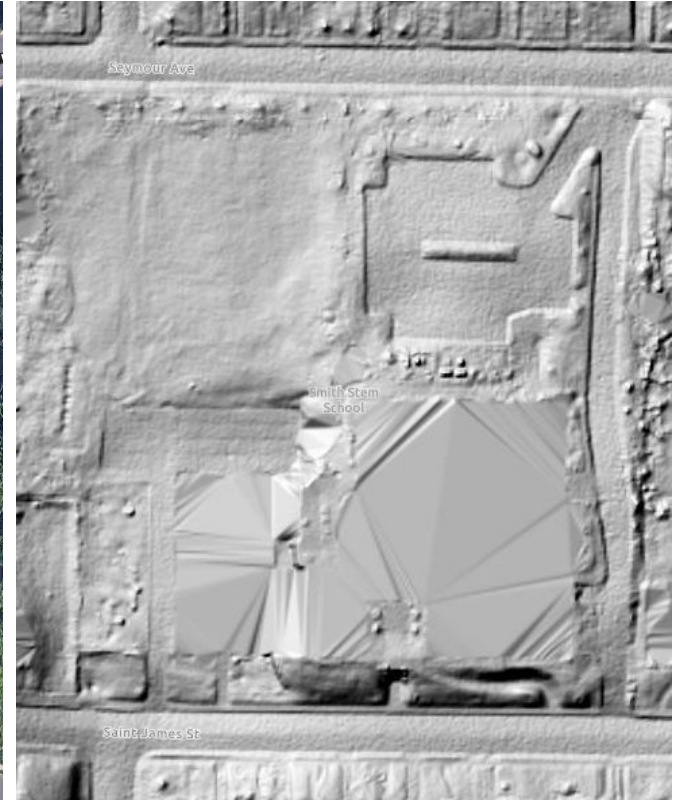
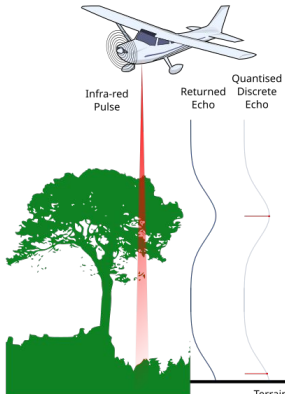
Here's a satellite and LIDAR view of our school.

What do you notice?



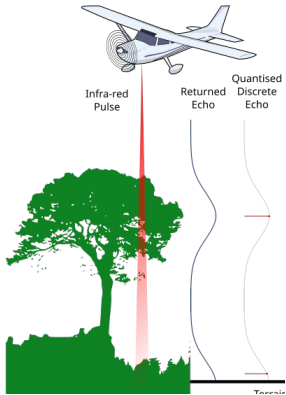
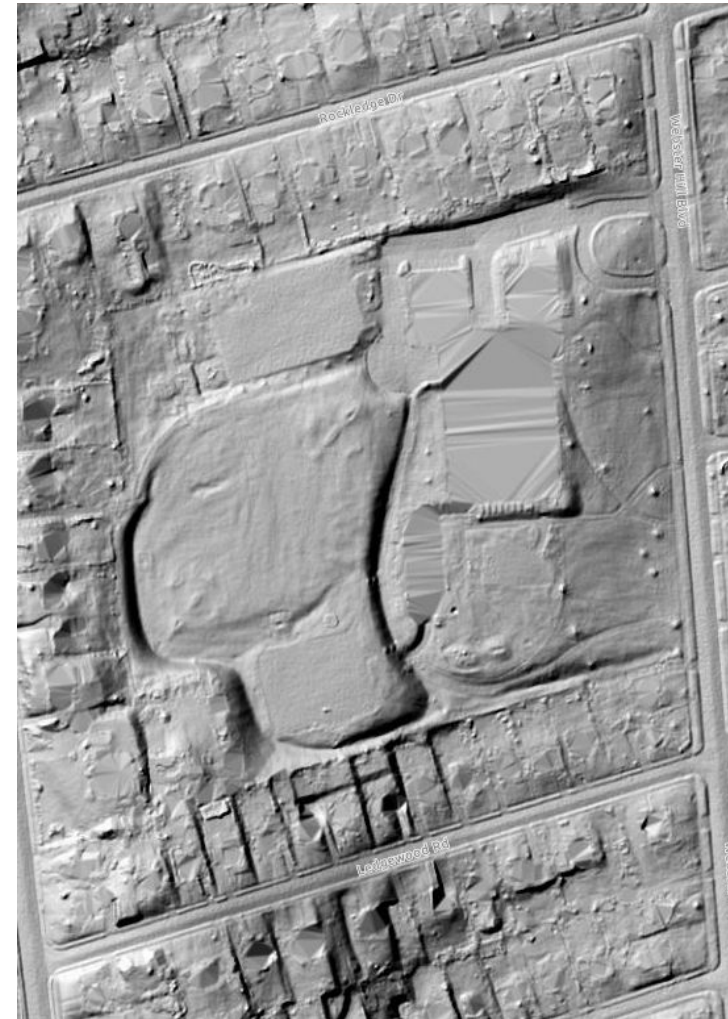
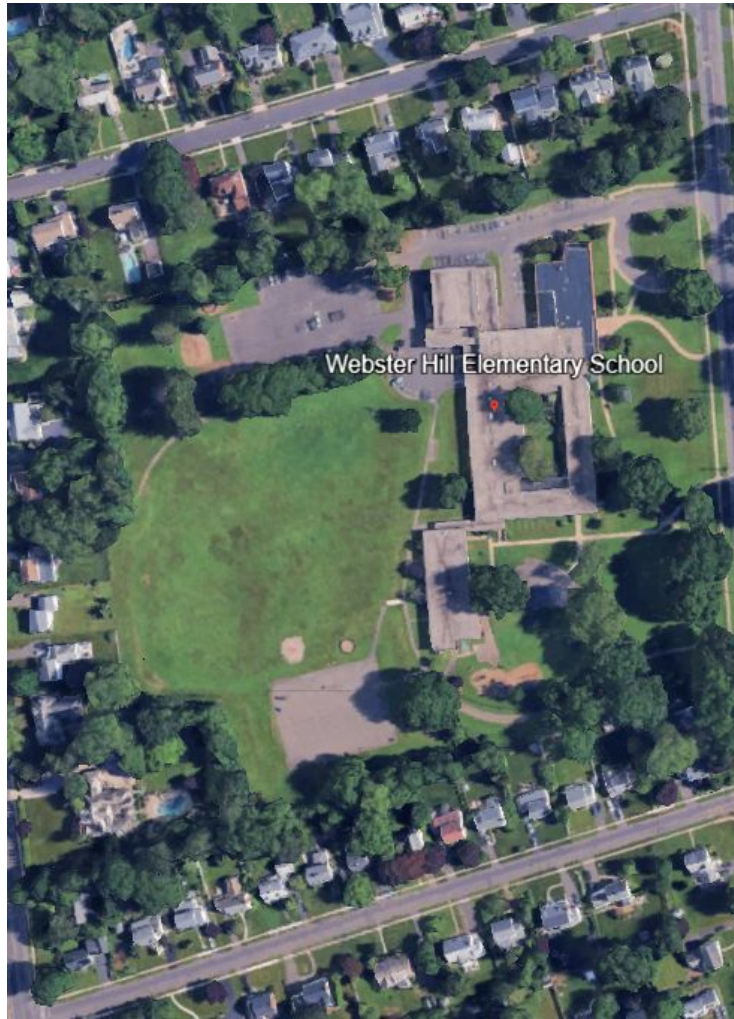
# Smith

Here's a satellite and LIDAR view of our school. What do you notice?



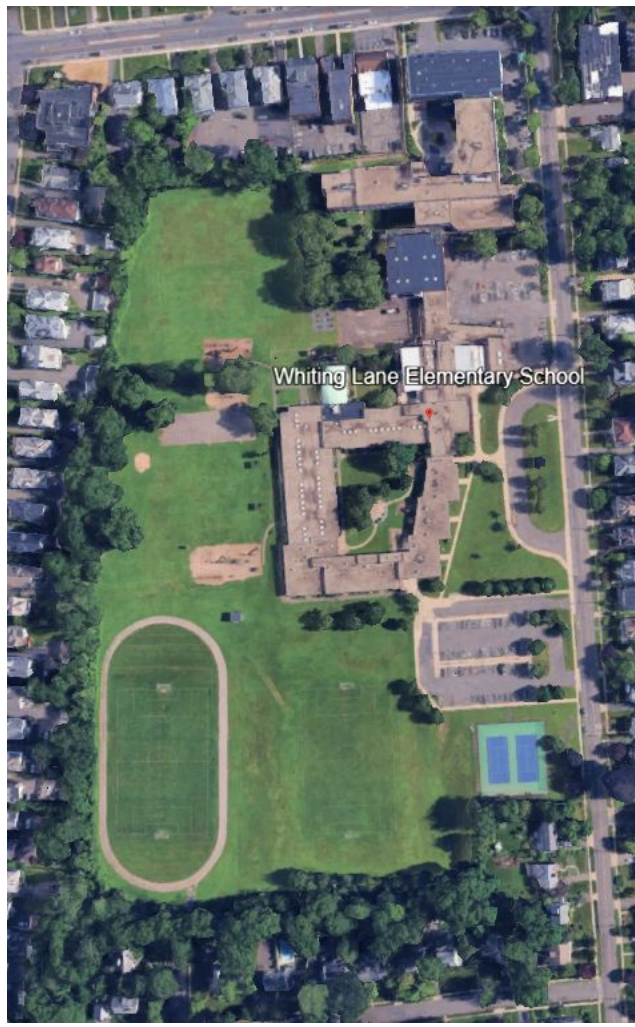
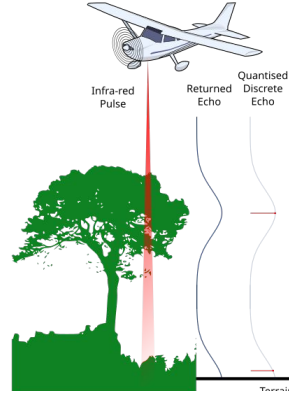
# Webster Hill

Here's a satellite and LIDAR view of our school. What do you notice?



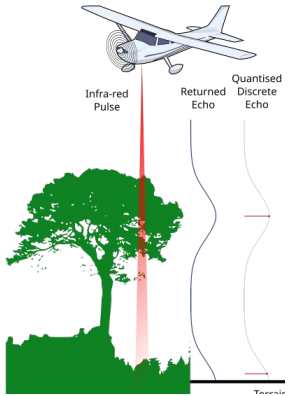
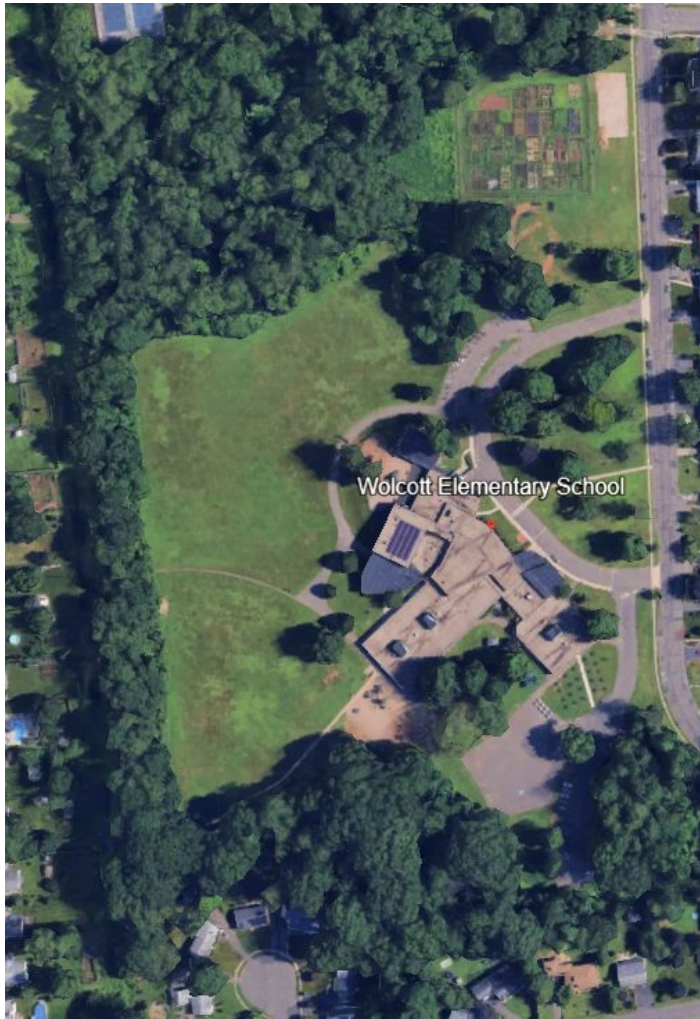
# Whiting Lane

Here's a satellite and LIDAR view of our school. What do you notice?



# Wolcott

Here's a satellite and LIDAR view of our school. What do you notice?





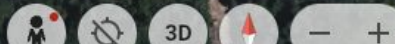
Fenton River

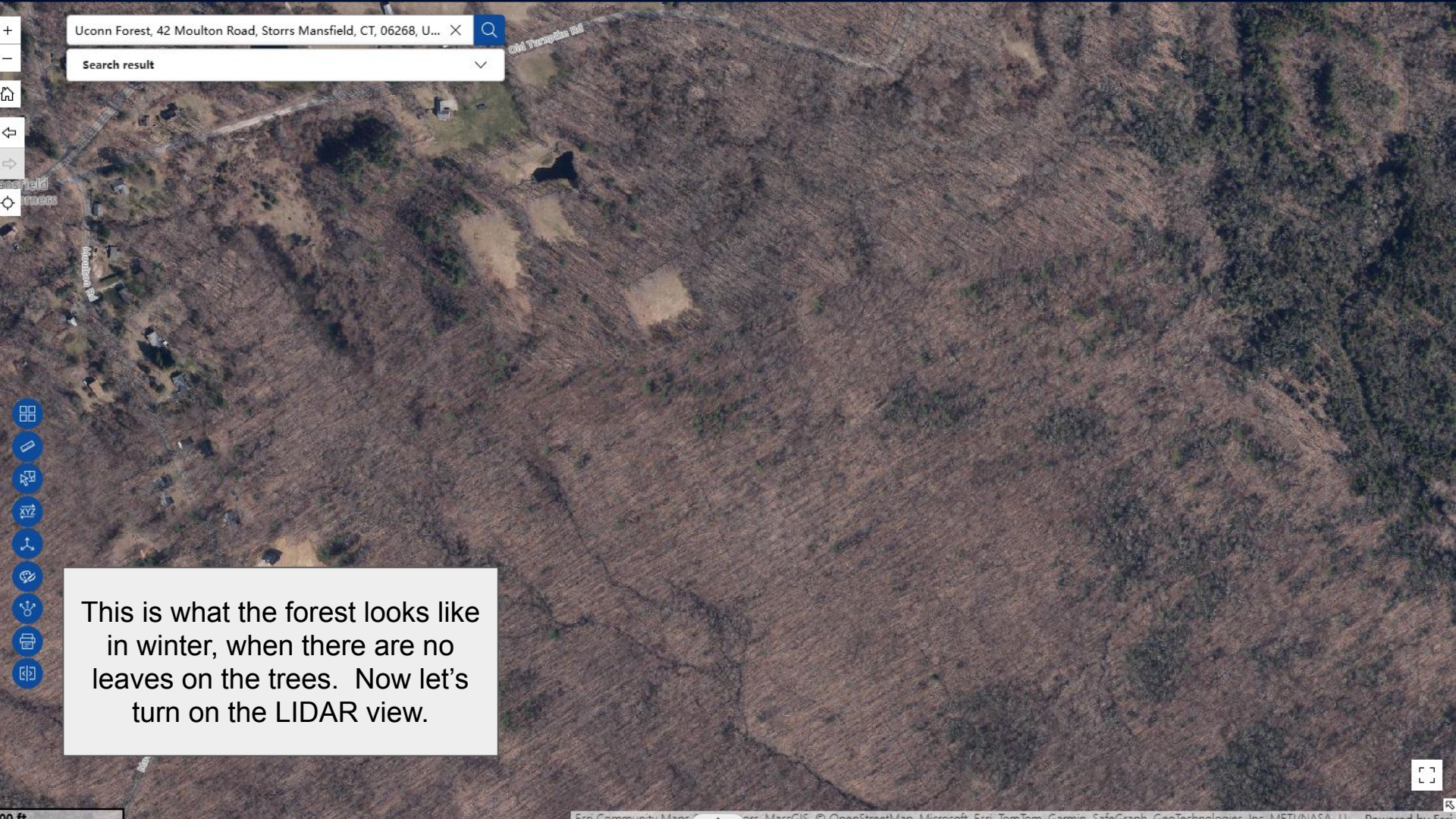
Fenton River

Fenton Tract

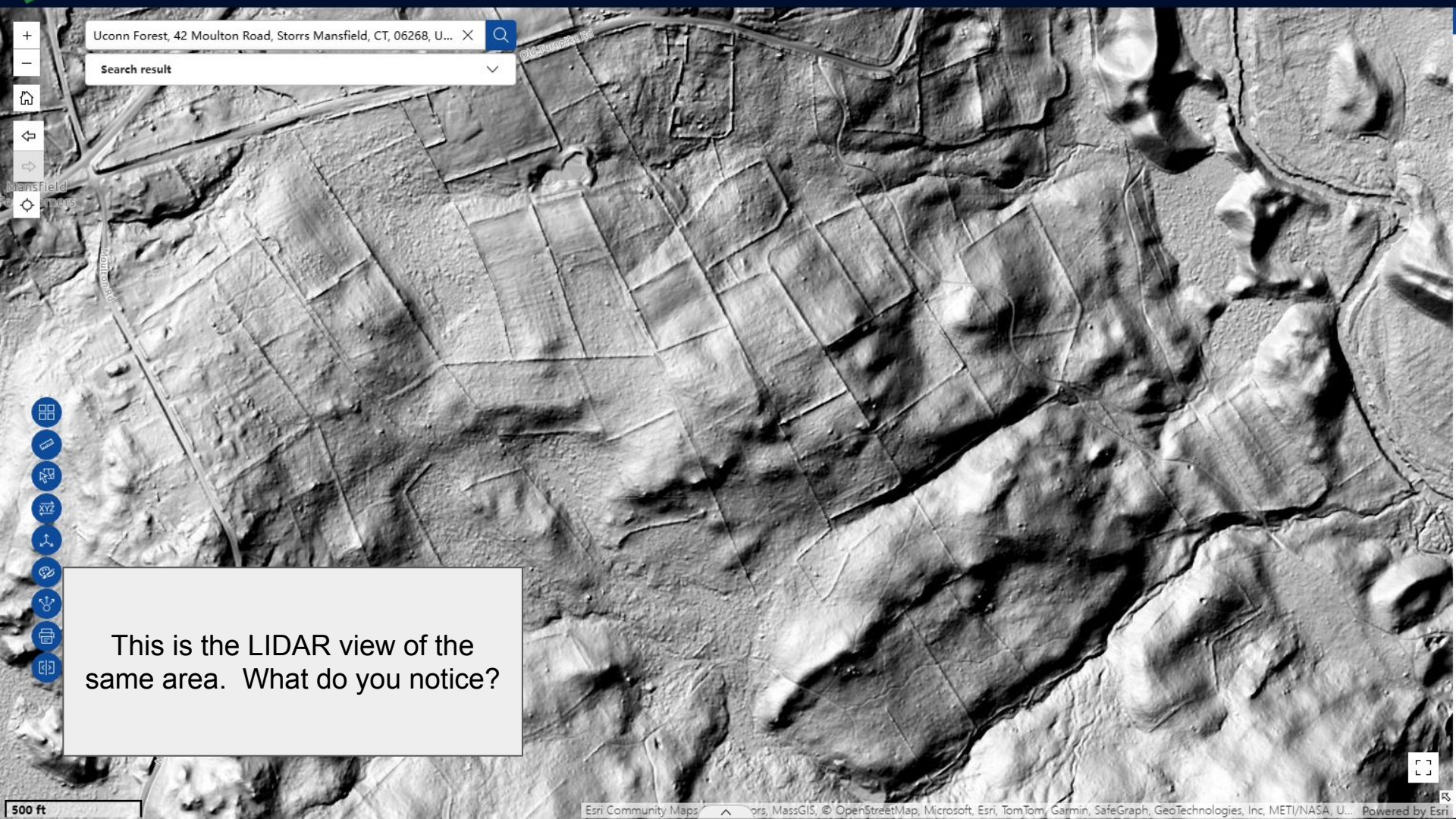
UConn Forest

Now let's take a look at the UConn forest...





This is what the forest looks like in winter, when there are no leaves on the trees. Now let's turn on the LIDAR view.



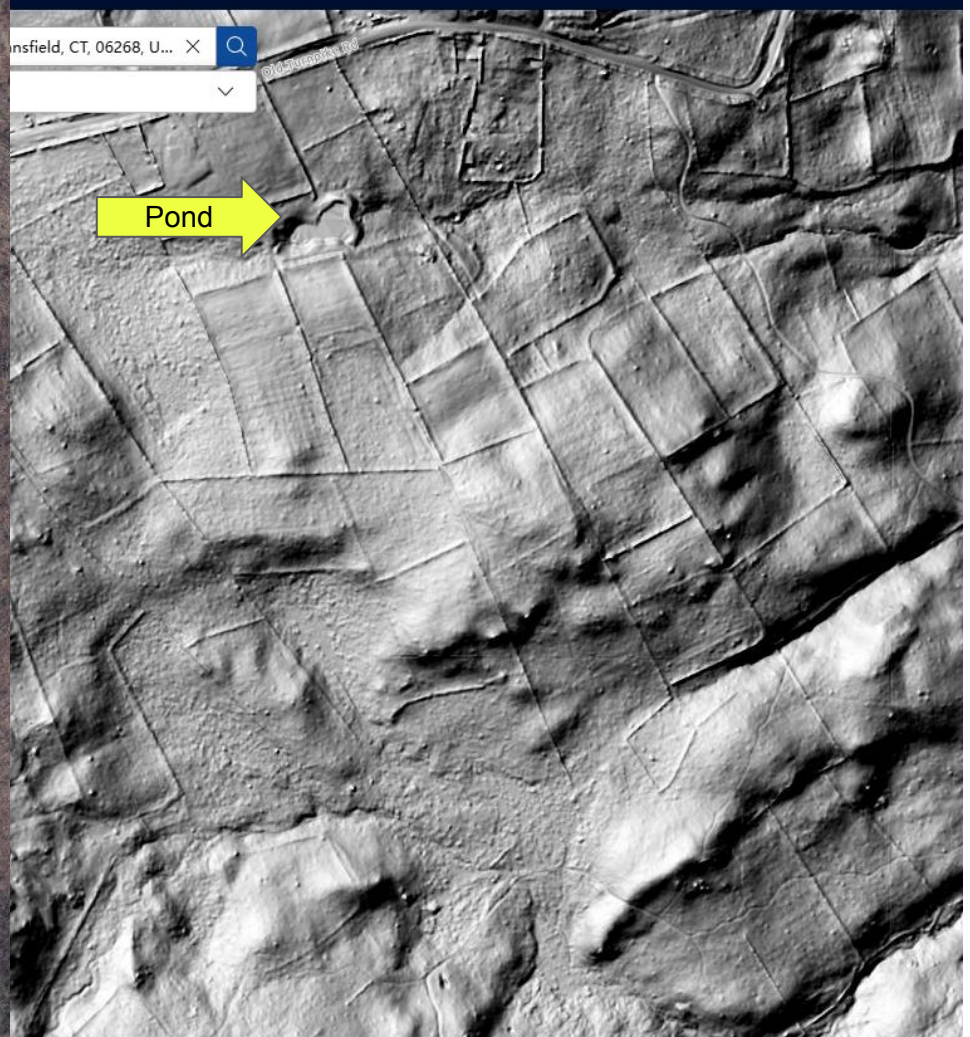
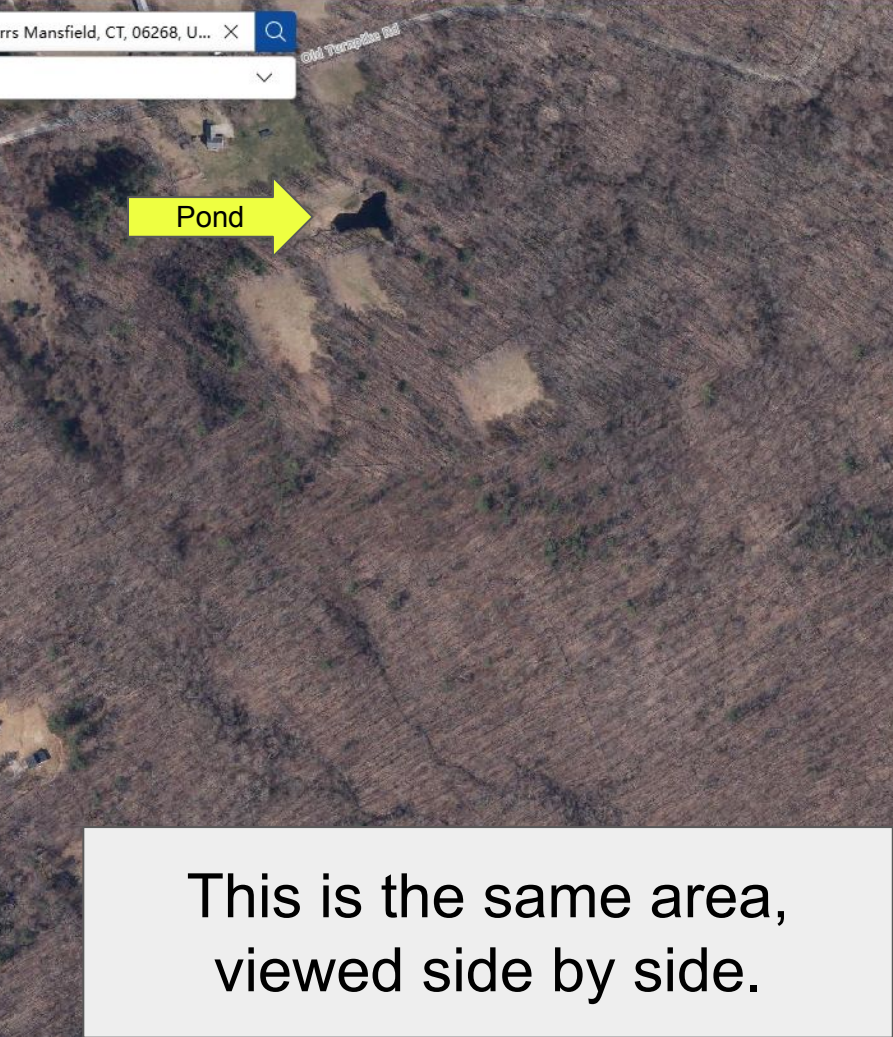
Uconn Forest, 42 Moulton Road, Storrs Mansfield, CT, 06268, U... X

Search result

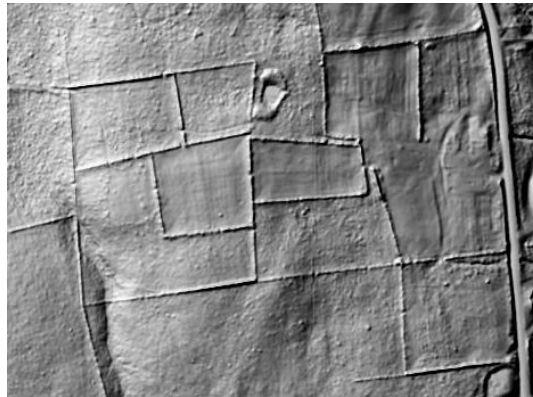
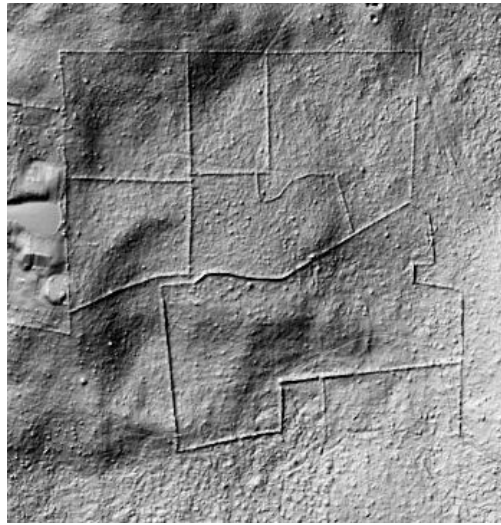


This is the LIDAR view of the same area. What do you notice?

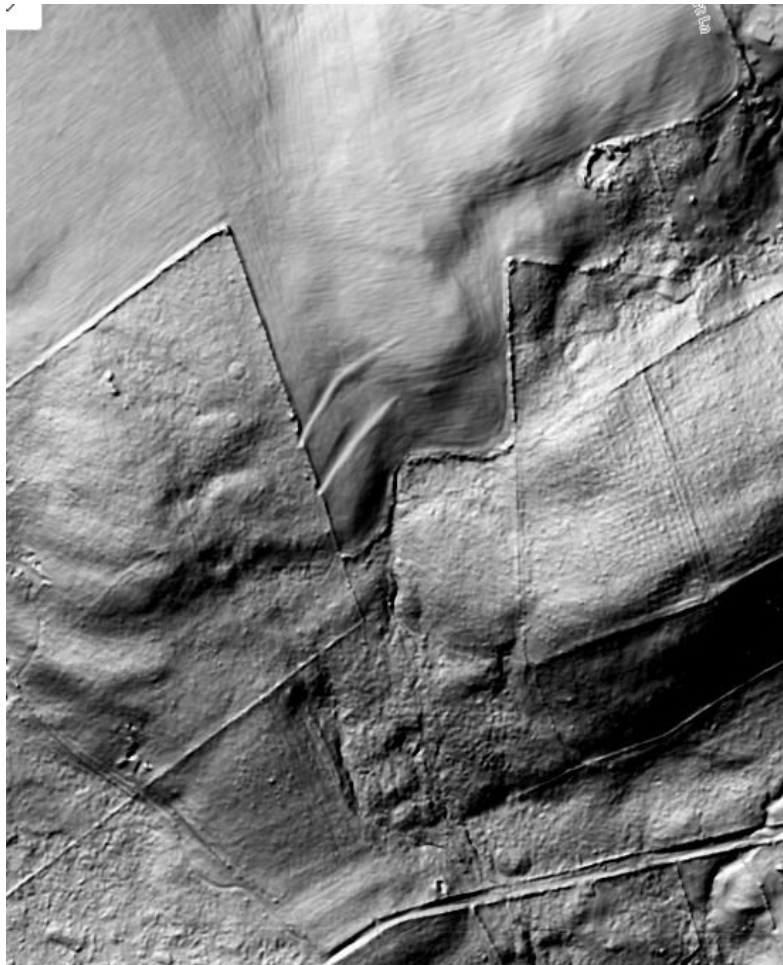
500 ft



This is the same area,  
viewed side by side.

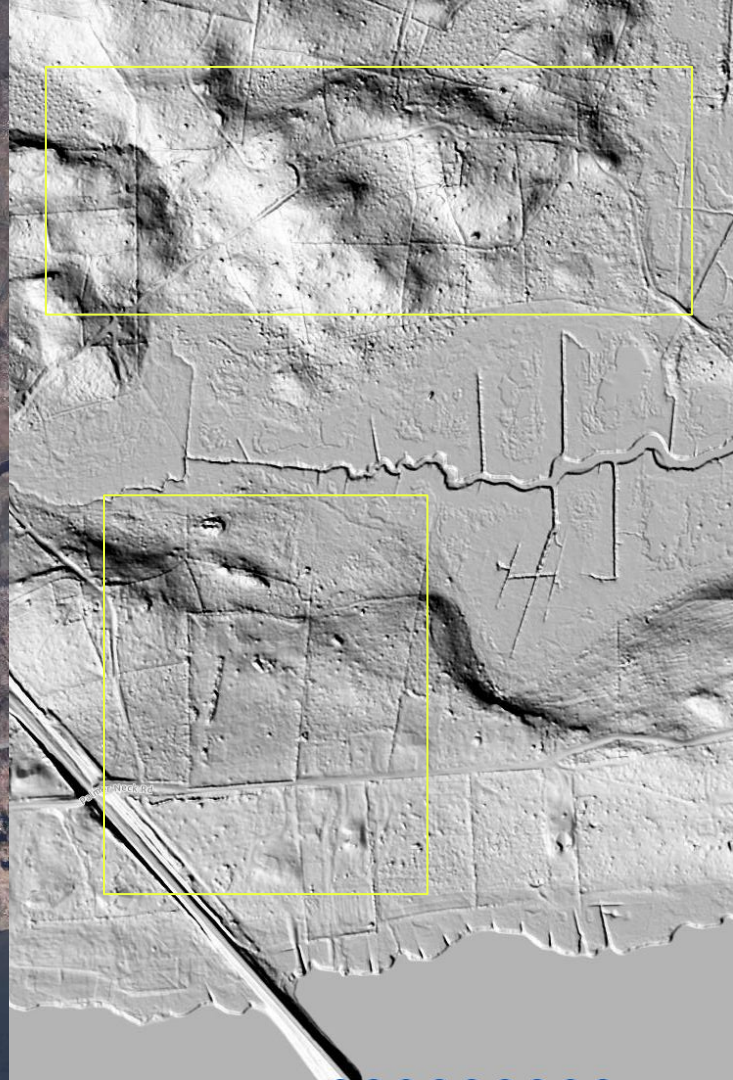


These shapes are hidden on the forest floor ALL OVER the state of Connecticut.

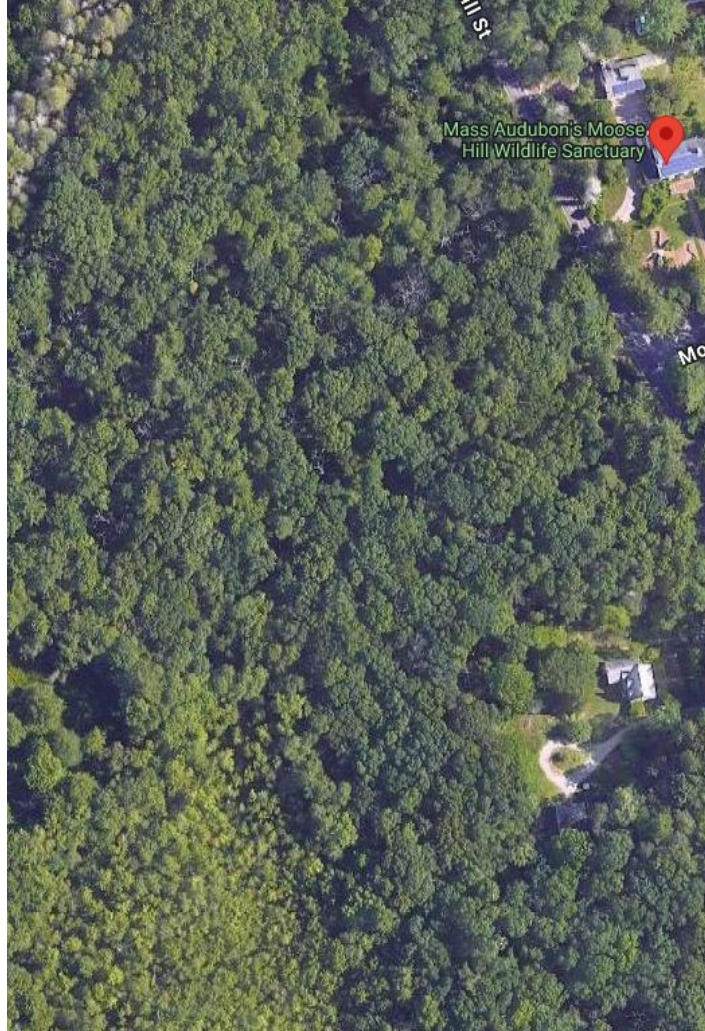


These shapes are hidden on the forest floor ALL OVER the state of Connecticut.

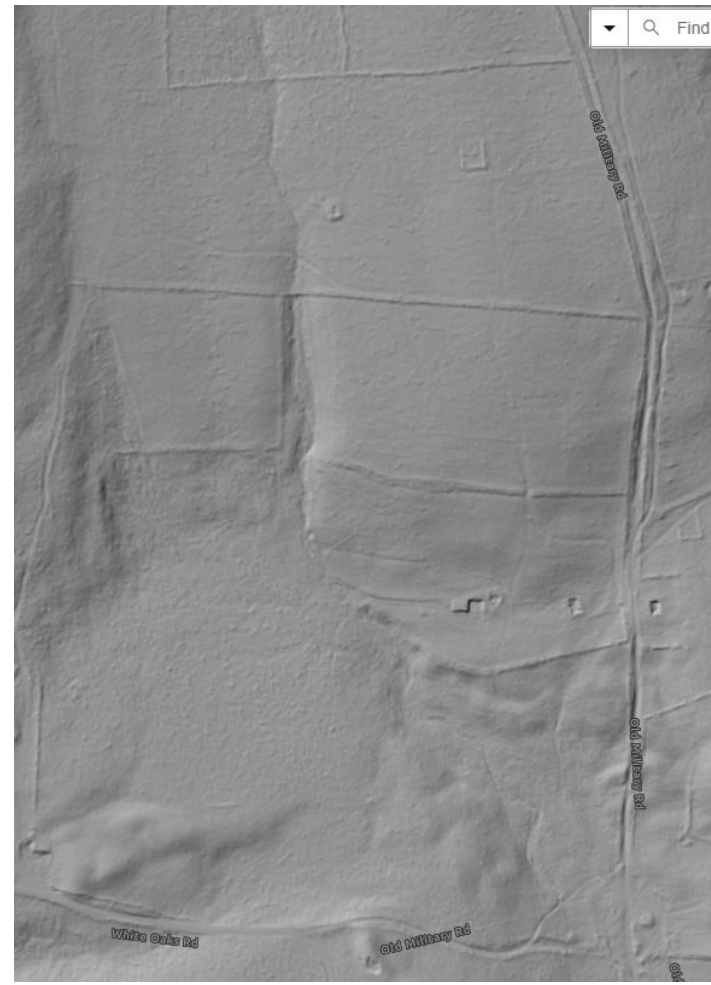
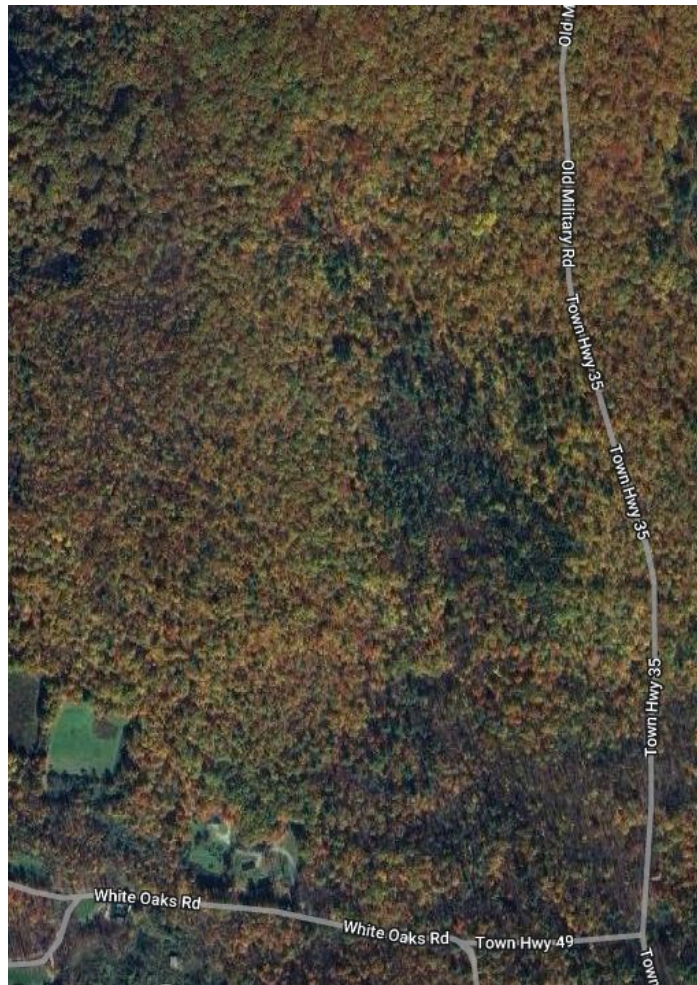
And wait... it's not just at UConn. It's on the Connecticut shoreline...

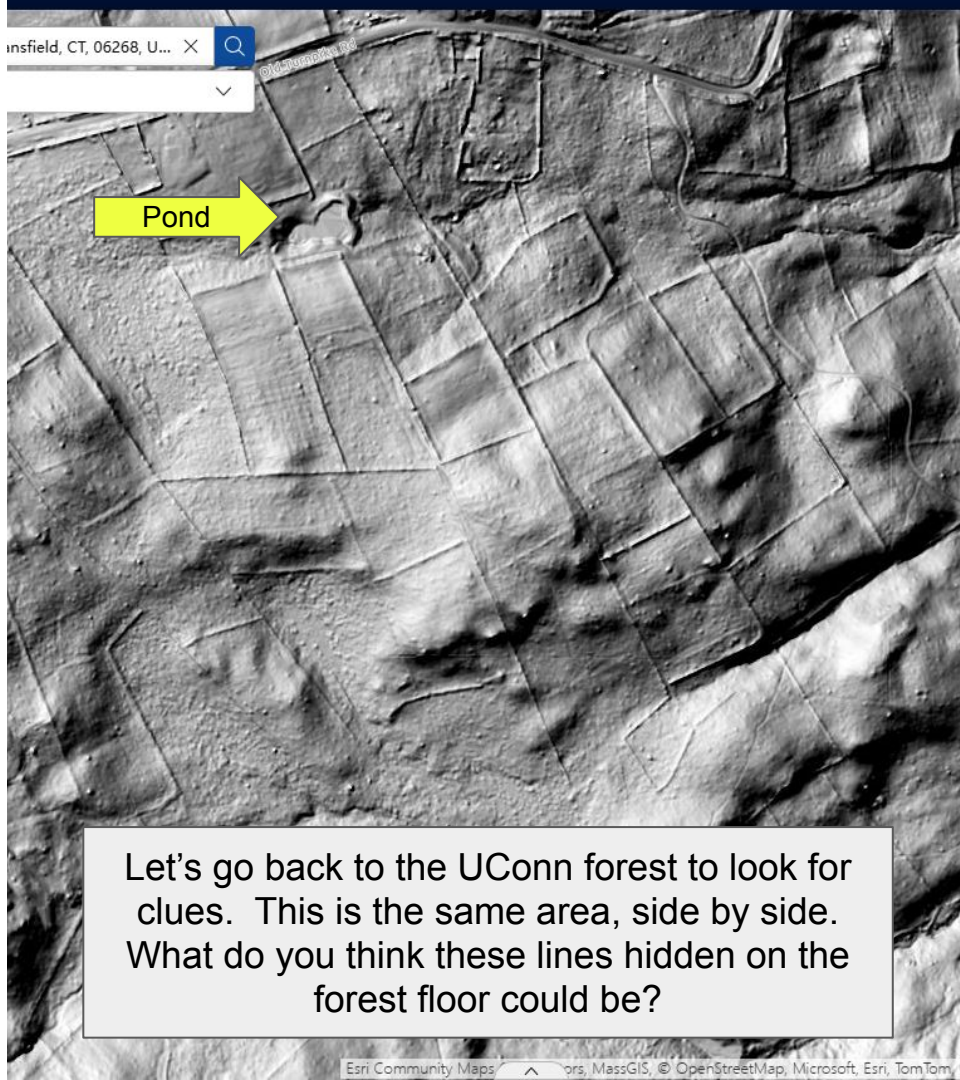


They're in  
Massachusetts right  
near Boston...



They're even deep  
in the woods of  
Vermont...



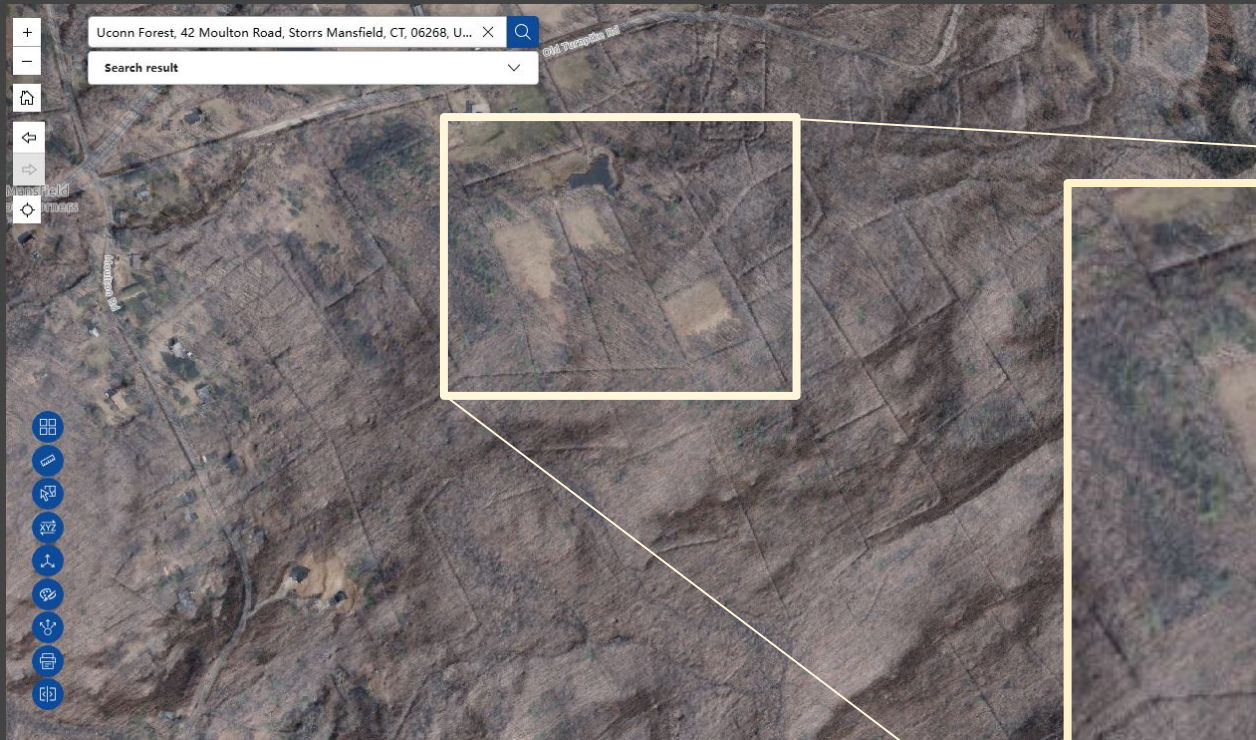


Pond

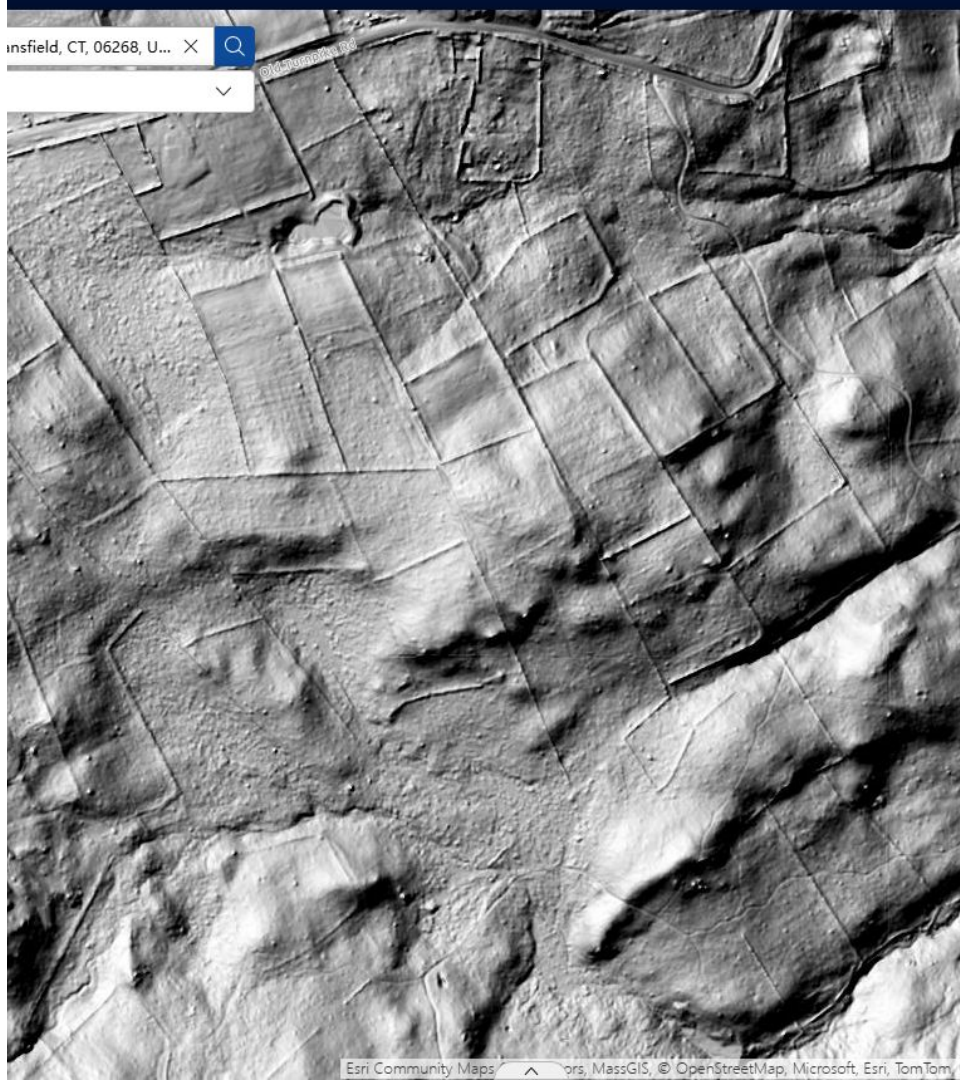
Let's go back to the UConn forest to look for clues. This is the same area, side by side. What do you think these lines hidden on the forest floor could be?



Pond



In this view, we see the two maps overlaid, with one over the other. Notice the areas with no trees. What clues does this give you?



Source: Stone Wall Initiative - University of Connecticut.



The forests of New England have miles and miles of stone walls. But does this solve our mystery? What questions do you have now?

This forest is located near the UConn campus in Tolland, Connecticut.

It doesn't have any stone walls.

What do you notice?



What differences do you notice between the UConn forest, which has stone walls, and the Tolland forest, which doesn't?



# REMNANTS OF A FORGOTTEN PAST

